

PLH-150FT(12V150AH)

Applications

- Telecommunication
- Uninterruptable Power Supply (UPS)
- Electric Power System (EPS)
- Emergency backup power supply
- Emergency light
- Railway signal
- Aircraft signal
- Alarm and security system
- Electronic apparatus and equipment

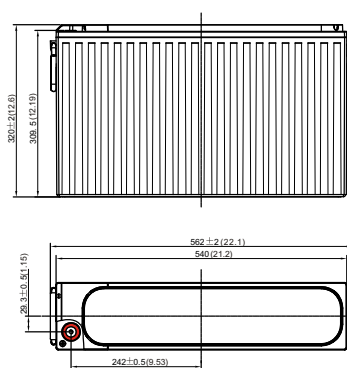


Features

- Long Life: 20 years design life
- Low internal resistance
- Low self-discharge rate
- Fast charging acceptance
- High rate discharge performance
- Flame retardant container UL94-V0
- 2 years shelf life @25 °C

Layout

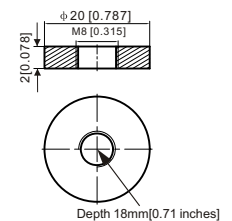
Unit: mm [inches]



Terminal

Terminal Model: T11

Unit: mm [inches]



Long Float Life and High Temperature series

PLH-150FT(12V150AH)

Specification

Nomial Voltage	12V		
Rated Capacity (Ah)	10hr	150Ah	@25°C to 1.80V/cell
	8hr	143Ah	@25°C to 1.75V/cell
	10hr	157Ah	@35°C to 1.80V/cell
	8hr	150Ah	@35°C to 1.75V/cell
Dimension	Length	562 ± 3mm	
	Width	125 ± 2mm	
	Height	260 ± 3mm	
	Total Height	260 ± 3mm	
Approx Weight	Approx 45.7Kg		
Terminal	T11		
Container Material	ABS		
Max. Discharge Current	1400A (5s)		
Internal Resistance	Approx 3.6mΩ		
Operating Temp. Range	Discharge : -40 ~ 65°C		
	Charge : 0 ~ 40°C		
	Storage : -20 ~ 40°C		
Capacity affected by Temperature	40°C	106%	
	35°C	105%	
	25°C	100%	
	0°C	86%	
Self Discharge	PLH series batteries can be stored up to 24 months at 25°C and then a freshening charge is required. For higher temperatures the time interval will be shorter.		



Performance - 25 °C

Constant Current Discharge (Amperes) at 25°C

F.V/Time	10min	15min	20min	30min	45min	1h	2h	3h	4h	5h	8h	10h	20h
1.85V/cell	268.7	230.4	198.4	152.1	113.6	90.7	51.0	37.0	29.6	24.7	17.0	14.5	7.69
1.80V/cell	300.2	250.6	212.4	160.8	119.1	94.8	53.3	38.6	30.9	25.8	17.6	15.0	7.95
1.75V/cell	323.4	266.1	224.4	166.8	123.3	97.9	54.6	39.7	31.7	26.5	17.9	15.2	8.07
1.70V/cell	347.5	280.5	233.1	172.3	126.4	99.8	55.7	40.4	32.1	26.9	18.2	15.4	8.14
1.67V/cell	369.4	293.8	240.1	175.5	128.1	101.2	56.4	41.0	32.5	27.1	18.4	15.5	8.20
1.60V/cell	393.1	305.3	247.9	180.2	130.5	103.0	57.2	41.5	32.9	27.4	18.6	15.6	8.25

Constant Power Discharge (Watts) at 25°C

F.V/Time	10min	15min	20min	30min	45min	1h	2h	3h	4h	5h	8h	10h	20h
1.85V/cell	509.7	440.8	381.8	296.1	224.4	179.7	102.0	74.1	59.6	49.9	34.4	29.5	15.7
1.80V/cell	560.4	473.0	404.7	311.0	233.9	187.0	105.9	77.0	61.9	51.8	35.5	30.4	16.2
1.75V/cell	597.7	497.6	423.9	320.0	240.6	191.8	108.0	78.8	63.3	53.0	36.1	30.8	16.4
1.70V/cell	632.4	518.2	436.0	327.8	245.2	194.5	109.6	79.9	64.0	53.6	36.6	30.9	16.5
1.67V/cell	665.6	537.3	445.7	332.5	247.3	196.5	110.6	80.8	64.5	54.0	36.9	31.1	16.5
1.60V/cell	696.6	550.1	455.0	338.1	250.0	198.2	111.3	81.3	64.9	54.2	37.1	31.2	16.6