

# PLH-200FT(12V200AH)

## Applications

- Telecommunication
- Uninterruptable Power Supply (UPS)
- Electric Power System (EPS)
- Emergency backup power supply
- Emergency light
- Railway signal
- Aircraft signal
- Alarm and security system
- Electronic apparatus and equipment

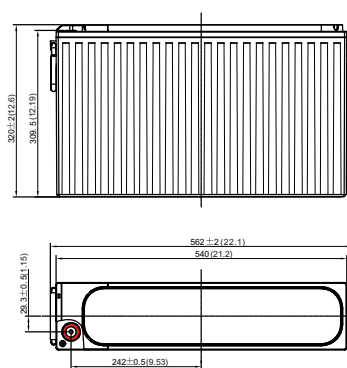


## Features

- Long Life: 20 years design life
- Low internal resistance
- Low self-discharge rate
- Fast charging acceptance
- High rate discharge performance
- Flame retardant container UL94-V0
- 2 years shelf life @25 °C

### Layout

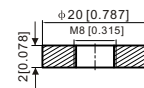
Unit: mm [inches]



### Terminal

Terminal Model: T11

Unit: mm [inches]



Depth 18mm[0.71 inches]



ISO9001 ISO14001

## Long Float Life and High Temperature series

# PLH-200FT(12V200AH)

### Specification

Nominal Voltage	12V	
Rated Capacity (Ah)	10hr	200Ah @25°C to 1.80V/cell
	8hr	190Ah @25°C to 1.75V/cell
	10hr	210Ah @35°C to 1.80V/cell
	8hr	199Ah @35°C to 1.75V/cell
Dimension	Length	562±3mm
	Width	125±2mm
	Height	320±3mm
	Total Height	320±3mm
Approx Weight	Approx 61.0Kg	
Terminal	T11	
Container Material	ABS	
Max. Discharge Current	1500A (5s)	
Internal Resistance	Approx 3.0mΩ	
Operating Temp. Range	Discharge : -40~65°C	
	Charge : 0~40°C	
	Storage : -20~40°C	
Capacity affected by Temperature	40°C	106%
	35°C	105%
	25°C	100%
	0°C	86%
Self Discharge	PLH series batteries can be stored up to 24 months at 25°C and then a freshening charge is required. For higher temperatures the time interval will be shorter.	



### Performance - 25°C

#### Constant Current Discharge (Amperes) at 25°C

F.V/Time	15min	20min	30min	45min	1h	2h	3h	4h	5h	8h	10h	20h
1.85V/cell	311.2	267.5	202.3	149.2	118.1	70.8	49.1	38.6	32.2	22.5	20.0	10.4
1.80V/cell	347.1	295.7	218.3	158.8	124.7	78.1	51.0	39.9	33.3	23.2	20.3	10.6
1.75V/cell	369.5	315.4	231.8	166.7	130.7	78.6	52.1	41.0	34.1	23.6	20.5	10.7
1.70V/cell	388.6	329.2	243.0	174.0	135.0	79.3	53.2	41.8	34.8	24.0	20.6	10.8
1.67V/cell	401.2	342.3	251.6	179.6	139.7	79.9	53.9	42.1	35.2	24.5	20.7	10.9
1.60V/cell	418.4	351.3	259.1	184.6	142.8	81.4	54.2	42.5	35.5	24.6	20.8	11.0

#### Constant Power Discharge (Watts) at 25°C

F.V/Time	15min	20min	30min	45min	1h	2h	3h	4h	5h	8h	10h	20h
1.85V/cell	600.9	520.7	396.5	295.2	234.4	137.4	98.4	77.6	64.9	45.7	40.5	21.2
1.80V/cell	666.9	571.7	425.0	311.9	245.8	141.4	101.6	79.8	66.8	46.7	41.1	21.5
1.75V/cell	705.3	604.3	447.6	325.2	255.9	143.9	103.3	81.4	68.0	47.6	41.4	21.7
1.70V/cell	734.6	624.8	465.5	337.1	263.0	147.1	105.2	82.8	69.1	48.4	41.5	21.8
1.67V/cell	750.8	643.0	483.0	346.0	270.4	149.1	106.1	83.3	69.8	48.9	41.8	21.9
1.60V/cell	756.0	652.7	498.8	352.2	274.4	150.5	106.1	83.7	70.1	49.0	41.7	21.8