

## High Power AGM Battery-UCP Series

# UCP12-135 (12V135W)

## Application

- Telecommunication center room
- Uninterruptable Power Supply (UPS)
- Electric Power System (EPS)
- Emergency backup power supply
- Emergency light
- Railway signal
- Aircraft signal
- Alarm and security system
- Electronic apparatus and equipment

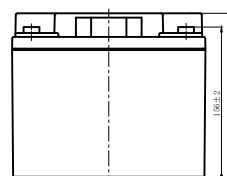
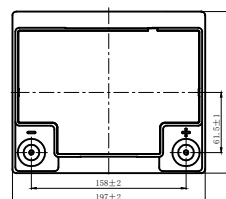


## Features

- High Performance: 10~12 years design life
- VRLA Battery, maintenance-free
- Low self-discharge rate
- Silver-coated copper terminals
- PbCaSn alloy for plate grids: less gassing, less self-discharge
- ABS container, Flame retardant UL94-V0

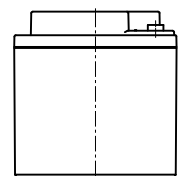
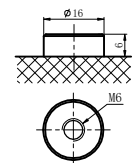
### Layout

Unit: mm



### Terminal

**T6 Terminal**  
Unit: mm [inches]

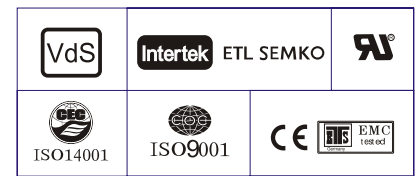


## High Power AGM Battery-UCP Series

# UCP12-135 (12V135W)

### Specification

Nominal Voltage	12V
Dimension	Length 197±2mm (7.75 inches)
	Width 165±2mm (6.50 inches)
	Container Height 170±2mm (6.69inches)
	Total Height (with Terminal) 170±2mm (6.69inches)
Rated Capacity	38.0 AH/3.80A (10hr, 1.80V/cell, 25°C/77°F)
	36.56 AH4.57A (8hr, 1.80V/cell, 25°C/77°F)
	34.45 AH/6.89A (5hr, 1.75V/cell, 25°C/77°F)
	31.5AH/10.5A (3hr, 1.75V/cell, 25°C/77°F)
	27.9AH/27.9A (1hr, 1.60V/cell, 25°C/77°F)
Approx Weight	Approx 11.4 kg (25.14lbs)
Terminal	T6
Container Material	ABS
Max. Discharge Current	550A (5s)
Internal Resistance	Approx 10.0mΩ
Operating Temp.Range	Discharge : -15~50°C (5~122°F)
	Charge : 0~40°C (32~104°F)
	Storage : -15~40°C (5~104°F)
Nominal Operating Temp. Range	25±3°C (77±5°F)
Capacity affected by Temperature	40°C (104°F) 103%
	25°C (77°F) 100%
	0°C (32°F) 86%
Self Discharge	UCP series batteries may be stored for up to 9 months at 25°C(77°F) and then a freshening charge is required. For higher temperatures the time interval will be shorter.



### Performance - 25 °C

#### Constant Current Discharge (Amperes) at 25 °C (77°F)

F.V/Time	5min	10min	15min	20min	25min	30min	45min	1h	1.5h	2h	3h	4h	5h	8h	10h
1.85V/cell	76.8	59.2	52.4	48.3	43.9	40.0	30.0	24.3	17.6	14.1	9.91	7.84	6.52	4.45	3.72
1.80V/cell	88.2	65.3	57.5	52.1	46.6	42.2	31.1	25.0	18.2	14.5	10.2	8.08	6.71	4.57	3.80
1.75V/cell	100.3	73.3	62.4	55.2	49.2	44.0	32.3	25.8	18.7	14.8	10.5	8.28	6.89	4.67	3.87
1.70V/cell	110.4	79.5	66.6	58.8	52.0	46.2	33.4	26.5	19.1	15.2	10.7	8.49	7.04	4.75	3.94
1.67V/cell	122.1	86.5	71.2	61.5	54.2	48.2	34.5	27.3	19.5	15.5	10.9	8.62	7.16	4.83	4.00
1.60V/cell	134.3	93.4	75.2	64.7	56.8	50.1	35.5	27.9	19.9	15.7	11.1	8.80	7.28	4.93	4.08

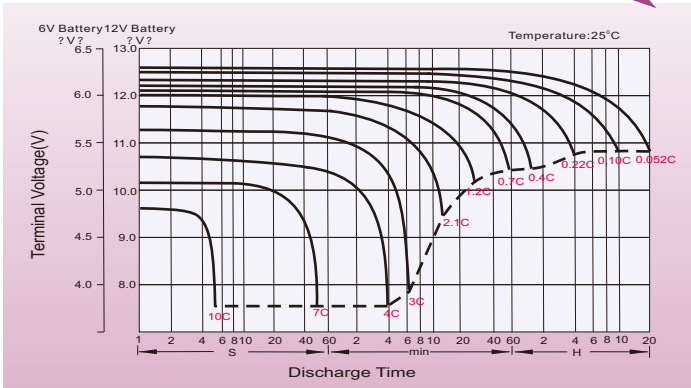
#### Constant Power Discharge (Watts) at 25 °C (77°F)

F.V/Time	5min	10min	15min	20min	25min	30min	45min	1h	1.5h	2h	3h	4h	5h	8h	10h
1.85V/cell	149.5	115.9	103.0	95.5	87.0	79.5	59.9	48.7	35.3	28.3	20.0	15.9	13.3	9.11	7.66
1.80V/cell	169.7	126.5	111.8	102.0	91.6	83.1	61.6	49.8	36.2	29.0	20.5	16.3	13.6	9.32	7.78
1.75V/cell	191.1	140.6	120.6	107.2	95.8	85.9	63.5	51.0	37.0	29.4	21.0	16.6	13.8	9.46	7.88
1.70V/cell	208.0	150.8	127.0	112.9	100.1	89.3	65.0	51.9	37.6	29.9	21.3	16.9	14.1	9.55	7.96
1.67V/cell	228.2	163.0	135.0	117.3	103.9	92.6	66.7	53.2	38.2	30.2	21.5	17.1	14.2	9.67	8.05
1.60V/cell	248.1	174.0	141.1	122.3	107.7	95.4	68.1	53.9	38.6	30.6	21.7	17.3	14.3	9.78	8.13

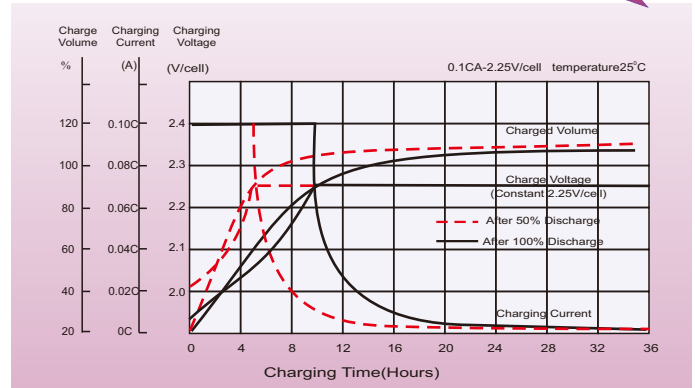
## High Power AGM Battery-UCP Series

### Characteristic Curve

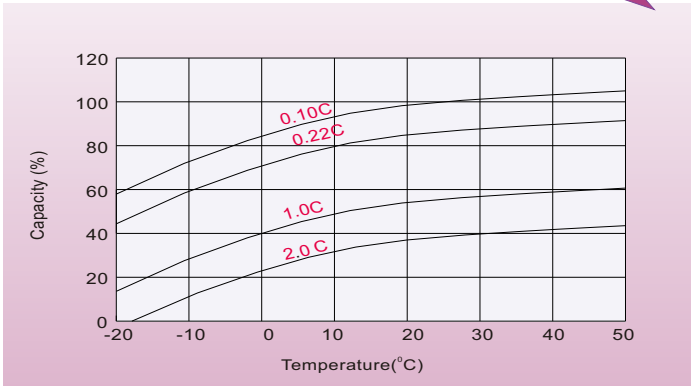
#### Discharge Characteristics



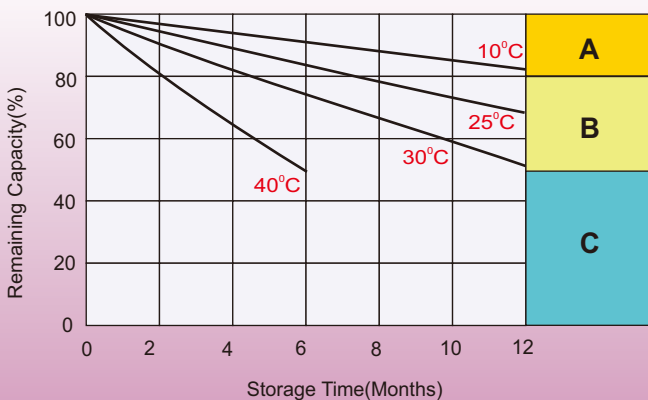
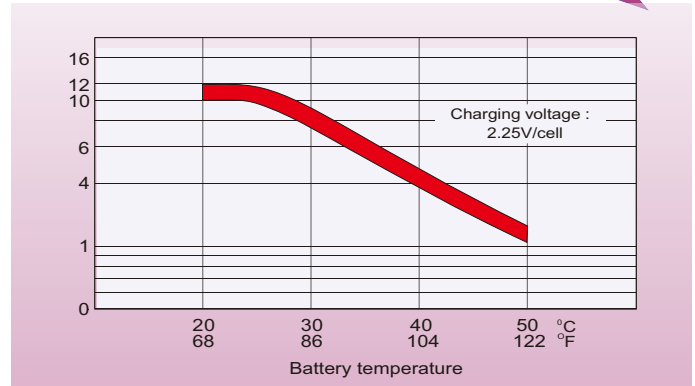
#### Float Charging Characteristics



#### Temperature Effects in Relation to Battery Capacity



#### Effect of Temperature on Long Term Float Life



#### Self Discharge Characteristics

- A** No supplementary charge required  
 (Carry out supplementary charge before use if 100% capacity is required.)
- B** Supplementary charge required before use. Optional charging way as below:
  1. Charged for above 3 days at limited current 0.25CA and constant volatge 2.25V/cell.
  2. Charged for above 20hours at limited current 0.25CA and constant volatge 2.45V/cell.
  3. Charged for 8~10hours at limited current 0.05CA .
- C** Supplementary charge may often fail to recover the capacity.  
 The battery should never be left standing till this is reached.