

High Power AGM Battery-UCP Series

UCP12-225 (12V225W)

Application

- Telecommunication center room
- Uninterruptable Power Supply (UPS)
- Electric Power System (EPS)
- Emergency backup power supply
- Emergency light
- Railway signal
- Aircraft signal
- Alarm and security system
- Electronic apparatus and equipment

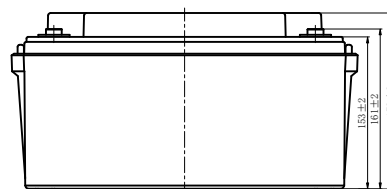
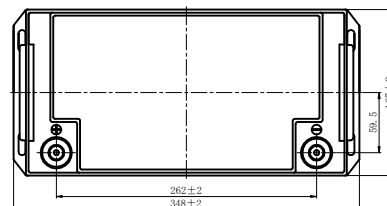


Features

- High Performance: 10~12 years design life
- VRLA Battery, maintenance-free
- Low self-discharge rate
- Silver-coated copper terminals
- PbCaSn alloy for plate grids: less gassing, less self-discharge
- ABS container, Flame retardant UL94-V0

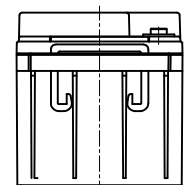
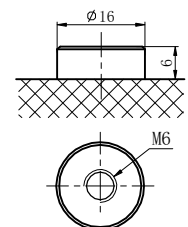
Layout

Unit: mm



Terminal

T6 Terminal
Unit: mm [inches]

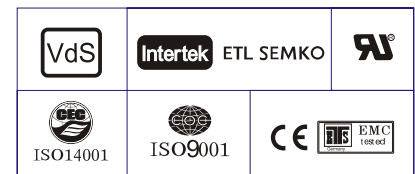


High Power AGM Battery-UCP Series

UCP12-225 (12V225W)

Specification

Nominal Voltage	12V	
Dimension	Length	348±3mm (13.70 inches)
	Width	167±2mm (6.57 inches)
	Container Height	178±2mm (7.01inches)
	Total Height (with Terminal)	178±2mm (7.01inches)
Rated Capacity	65.0 AH/6.50A	(10hr, 1.80V/cell, 25°C/77°F)
	62.56 AH/7.82A	(8hr, 1.80V/cell, 25°C/77°F)
	59.0 AH/11.8A	(5hr, 1.75V/cell, 25°C/77°F)
	53.4 AH/17.8A	(3hr, 1.75V/cell, 25°C/77°F)
	47.7AH/47.7A	(1hr, 1.60V/cell, 25°C/77°F)
Approx Weight	Approx 19.2 kg (42.34lbs)	
Terminal	T6	
Container Material	ABS	
Max. Discharge Current	975A (5s)	
Internal Resistance	Approx 7.0mΩ	
Operating Temp.Range	Discharge : -15~50°C (5~122°F)	
	Charge : 0~40°C (32~104°F)	
	Storage : -15~40°C (5~104°F)	
Nominal Operating Temp. Range	25±3°C (77±5°F)	
Capacity affected by Temperature	40°C (104°F)	103%
	25°C (77°F)	100%
	0°C (32°F)	86%
Self Discharge	UCP series batteries may be stored for up to 9 months at 25°C(77°F) and then a freshening charge is required. For higher temperatures the time interval will be shorter.	



Performance - 25 °C

Constant Current Discharge (Amperes) at 25 °C (77°F)

F.V/Time	5min	10min	15min	20min	25min	30min	45min	1h	1.5h	2h	3h	4h	5h	8h	10h
1.85V/cell	131.4	102.5	90.1	82.6	75.7	68.5	51.3	41.5	30.5	24.2	16.9	13.4	11.1	7.66	6.37
1.80V/cell	149.2	113.7	98.1	89.1	80.3	72.2	53.2	42.9	31.5	24.8	17.4	13.8	11.5	7.82	6.50
1.75V/cell	167.7	125.4	105.6	94.5	84.0	75.3	55.1	44.1	32.2	25.4	17.8	14.2	11.8	7.99	6.62
1.70V/cell	184.2	134.8	112.5	100.5	88.9	79.1	57.1	45.4	32.8	25.9	18.2	14.5	12.0	8.15	6.73
1.67V/cell	199.6	144.0	118.7	105.2	92.9	82.5	58.9	46.5	33.4	26.5	18.5	14.7	12.2	8.28	6.85
1.60V/cell	218.8	155.9	127.1	110.7	97.0	85.7	61.0	48.1	34.2	26.9	18.8	15.1	12.5	8.44	6.97

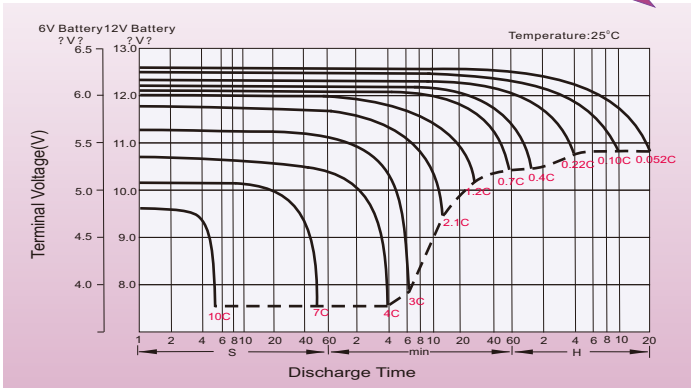
Constant Power Discharge (Watts) at 25 °C (77°F)

F.V/Time	5min	10min	15min	20min	25min	30min	45min	1h	1.5h	2h	3h	4h	5h	8h	10h
1.85V/cell	255.7	200.5	177.3	163.4	150.1	136.2	102.4	83.2	61.3	48.6	34.1	27.2	22.7	15.7	13.1
1.80V/cell	287.3	220.1	191.1	174.5	157.6	142.2	105.3	85.4	62.8	49.6	35.0	27.9	23.2	15.9	13.3
1.75V/cell	319.5	240.6	203.9	183.3	163.5	147.0	108.2	87.1	63.7	50.4	35.6	28.3	23.7	16.2	13.5
1.70V/cell	346.9	255.7	214.7	193.1	171.3	152.9	111.2	88.9	64.5	51.2	36.2	28.9	24.0	16.4	13.6
1.67V/cell	372.9	271.1	225.0	200.7	178.0	158.6	114.0	90.7	65.4	51.9	36.6	29.2	24.3	16.6	13.8
1.60V/cell	404.1	290.4	238.4	209.3	183.9	163.1	117.0	92.8	66.3	52.3	36.8	29.5	24.5	16.7	13.9

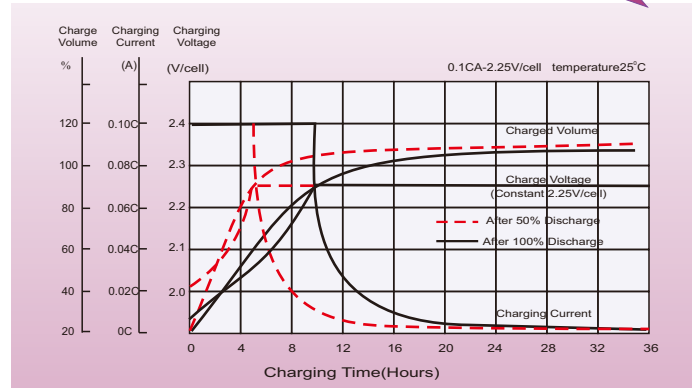
High Power AGM Battery-UCP Series

Characteristic Curve

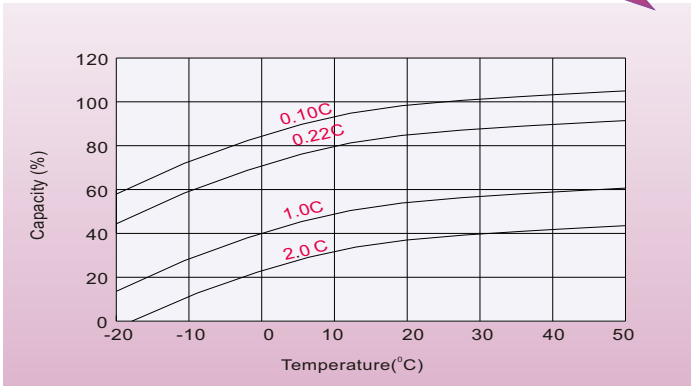
Discharge Characteristics



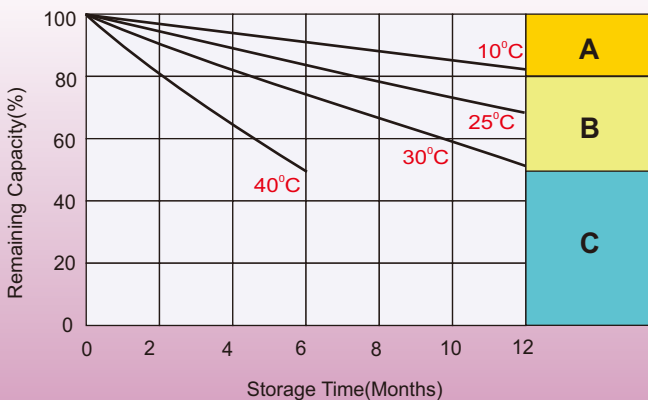
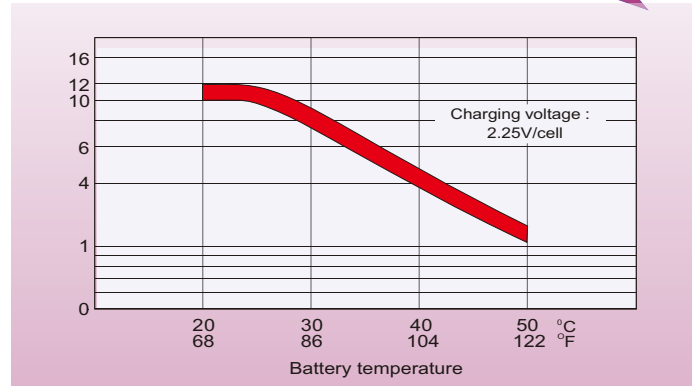
Float Charging Characteristics



Temperature Effects in Relation to Battery Capacity



Effect of Temperature on Long Term Float Life



Self Discharge Characteristics

- A** No supplementary charge required
 (Carry out supplementary charge before use if 100% capacity is required.)
- B** Supplementary charge required before use. Optional charging way as below:
 1. Charged for above 3 days at limited current 0.25CA and constant volatge 2.25V/cell.
 2. Charged for above 20hours at limited current 0.25CA and constant volatge 2.45V/cell.
 3. Charged for 8~10hours at limited current 0.05CA .
- C** Supplementary charge may often fail to recover the capacity.
 The battery should never be left standing till this is reached.